

Unification Commission
March 9 – 11, 2023
Presbyterian Center @ 100 Witherspoon

Business Sessions: Conference Room 1C / Meals: Conference Room 1B

AGENDA

THURSDAY, MARCH 9		
Noon – 1:00 pm	Arrive, lunch available in Conference Center	
1:00 pm	Devotion	Felipe Martinez
	Land Acknowledgement	Barry Creech
	Greetings: GA Co-Mods, Stated Clerk, Executive Director, Funding Model Team Co-mods	Ruth Santana Grace, J Herbert Nelson II, Diane Givens Moffett, Mike Wilson, Erica Rader
	Covenant and Co Moderators Report	Felipe Martinez and Cristi Scott Ligon
2:45	Break	
3:00	Town Hall (Chapel) for OGA and PMA staff (in person only)	
4:15	Board overview/agency structure overview.	OGA and PMA
5:15	Break	
5:30	Tour of building	Kerry Rice
6:00	Dinner (catered in)	
7:00	History: All Agency Review, Moving Forward/Financial Sustainability/Per Capita	Deb Avery, Jose Rosa-Rivera, Dave Davis, Scott Lumsden
	Closed Session	
8:00	Adjourn	

FRIDAY, MARCH 10		
9:00	Convene with prayer	
	Financial Overview (45 min)	Ian Hall, CFO/COO Denise Hampton, Controller
	Low hanging fruit—areas of current collaboration (20 min)	Barry Creech Kerry Rice
10:15	Break	

Unification Commission
March 9 – 11, 2023
Presbyterian Center @ 100 Witherspoon

Business Sessions: Conference Room 1C / Meals: Conference Room 1B

AGENDA

FRIDAY, MARCH 10		
10:30	Review mandates Timeline and products Consultations	Cristi Scott Ligon Felipe Martinez Kathy Lueckert
Noon	Lunch (including option for assistance with Equip)	
1:00	Zoom with OGA and PMA Staff	
2:15	Break	
2:30	Planning our Work Project Plan Work Groups	Cristi Scott Ligon Felipe Martinez
3:45	Break	
4:00	Closed session	
6:00	Dinner out—Bristol Downtown	

SATURDAY, MARCH 11		
9:00	Convene with prayer	
	Fleshing out the work plan and timelines What additional information is needed?	Cristi Scott Ligon Felipe Martinez
10:30	Break	
10:45	Wrap up and closed session (if needed)	
12:00	Closing prayer and Lunch	

**Minutes of the
Commission to Unify the Office of the General Assembly
and the Presbyterian Mission Agency
February 18, 2023**

- Gathering The Commission to Unify the Office of the General Assembly and the Presbyterian Mission Agency held an online meeting using Zoom, an online audio and web conferencing platform. The public, including press, was able to watch in real-time (and view a recording) via Vimeo, a video sharing platform, on the website of the Office of the General Assembly, in the General Assembly section (oga.pcusa.org/ga; accessed February 21, 2023).
- Opening Prayer Cristi Scott Ligon, co-moderator of the Commission to Unify the Office of the General Assembly and the Presbyterian Mission Agency (“Unification Commission”), called the meeting to order at 3:00 p.m. EST, and recognized Bill Teng for the opening prayer.
- Roll The roll was formed:

Commissioners (as appointed by the Co-Moderators of the 225th General Assembly (2022); criteria and demographics included for the record):

Felipe N. Martínez, Co-Moderator, Teaching Elder, Presbytery of Ohio Valley; Commissioner, 225th General Assembly (2022)
Cristi Scott Ligon, Co-Moderator, Ruling Elder, Presbytery of Middle Tennessee; Commissioner, 225th General Assembly (2022)
Debra Avery, Teaching Elder, Presbytery of Great Rivers; Moving Forward Implementation Special Committee
Carson Brown, Ruling Elder, Presbytery of Peace River; Young Adult Advisory Delegate, 225th General Assembly (2022)
Dee Cooper, Teaching Elder, Presbytery of Denver; Presbyterian Mission Agency Board
Frances Lin, Ruling Elder, Presbytery of San Diego; At-Large
Scott Lumsden, Teaching Elder, Presbytery of Seattle; Per Capita and Financial Sustainability Special Committee
Emily Martin, Ruling Elder, Presbytery of North Central California; Young Adult Advisory Delegate, 225th General Assembly (2022)
José Rosa-Rivera, Ruling Elder, Presbiterio de San Juan; Per Capita and Financial Sustainability Special Committee
Bill Teng, Teaching Elder, Presbytery of Peace River; Presbyterian Church (U.S.A.), A Corporation Board

Ex-Officio:
Shavon Starling-Louis, Co Moderator, 225th General Assembly (2022)

Staff and Support:
Raymond Bonwell, recorder
Barry Creech, Deputy Executive Director for Administration, Presbyterian Mission Agency
Kathy Lueckert, President, Presbyterian Church (U.S.A.), A Corporation
Kerry Rice, Deputy Stated Clerk, Office of the General Assembly
Alejandra Sherman, Executive Assistant to the President, Presbyterian Church (U.S.A.), A Corporation

Invited Guests:

Susan Barnett, PhD, MSSW, Director, Research Services, Presbyterian Church
(U.S.A.)

Excused:

David Davis, Commissioner, Teaching Elder, Presbytery of the Coastlands;
Committee on the Office of the General Assembly
Kris Thompson, Ruling Elder, Presbytery of National Capital; At-Large
Ruth Faith Santana-Grace, Ex-Officio, Co-Moderator, 225th General Assembly
(2022)

Land
Acknowledgment

Francis Lin led the land acknowledgment, informed by the location of the Presbytery of San Diego, and acknowledged the earlier inhabitants of the Kumeyaay Nation, whose focus on ecological diversity continues to the present.

Agenda

Without objection, the agenda was adopted. The agenda and presentations were distributed to the Unification Commission and publicly posted prior to the meeting.

Minutes

Upon motion and second, and without objection, the Minutes of the January 21, 2023, meeting were approved.

Covenant

Felipe N. Martínez and Cristi Scott Ligon, in their roles as co-moderators, read the covenant as a reminder of what the Unification Commission had adopted.

Co-Moderator
Report

Felipe N. Martínez and Cristi Scott Ligon, provided the Unification Commission with an update of their work as co-moderators. The Unification Commission received a copy of the email of thanksgiving and prayerful support that was distributed to the employees of the Office of the General Assembly (“OGA”) (and the Committee on the Office of the General Assembly) and the Presbyterian Mission Agency (“PMA”) (and the Presbyterian Mission Agency Board).

The co-moderators held a discussion regarding PC(USA) A Corporation, the corporate expression of OGA and PMA. The other four national agencies are each independently incorporated.

The co-moderators shared they traveled to Louisville, Ky. and met with J. Herbert Nelson II, stated clerk, OGA, Diane Givens-Moffett, executive director, PMA, and support staff.

Overview of
Presentations

Felipe Martínez and Cristi Scott Ligon requested three background presentations to be developed and presented by subject matter experts. These background presentations were meant to provide historical and societal context for the changing nature of American Christianity. These three presentations – distributed prior to the meeting – focused on the following:

- trends in general in American religion, and in particular Mainline Protestantism;
- an overview of changes in the Presbyterian Church (U.S.A.); and,
- an overview of the organizational and structural changes in the Presbyterian Church (U.S.A.).

Trends in
American Religion
and Protestantism

Susan Barnett, director, Research Services, Presbyterian Church (U.S.A.) was introduced as a guest for the first presentation ([Attachment 1](#)). A highlight of the presentation was the decline of the percent of the American population expressing a religious affiliation declining since 1983, with a parallel decline in the PC(USA) membership.

There was a discussion around when New Worshipping Communities (“NWCs”) were included in data; when data references “membership and adherents” then NWCs are included in the datasets.

It was noted all the presentations were also loaded into EQUIP (the training and support site administered by OGA, accessible at equip.pcusa.org).

Trends in the
PC(USA)

Felipe Martínez, after thanking Susan Barnett, welcomed Kerry Rice, deputy stated clerk, OGA, and staff to this Commission, for an overview of trends in the PC(USA) ([Attachment 2](#)). A highlight of the presentation was the denominational evolution of the PC(USA) as having 2/3 of all congregations with less than 100 members, while most membership is in the larger churches of more than 150 members.

The discussion returned to NWCs, which are reported by each presbytery, which may or may not include immigrant faith communities.

Structural Changes
in the PC(USA)

Felipe Martínez, after thanking Kerry Rice, welcomed Barry Creech, deputy executive director for administration, PMA, and staff to this Commission, for an overview of structural changes in the PC(USA) ([Attachment 3](#)). A highlight were the recurring themes of trust and conflict, and the shifting emphasis over time on centralization and decentralization.

There were several questions focusing on the changing focus of “ministry units” to “program areas” and the organizational grouping became fewer in number and larger in scope over time. Barry Creech shared the draft presentation was much more detailed in scope and length, and would post this draft presentation to EQUIP to go beyond the intended higher-level focus of the final presentation.

Felipe Martínez thanked Barry Creech, and involved in the development of the presentations. It was noted that even intentionally engaged lifelong Presbyterians were able to learn something new from the presentations.

Preparing for the
Next Meeting (In-
Person with
Remote
Participation)

Felipe Martínez and Cristi Scott Ligon verbally shared their current draft overview for the schedule for the next meeting, March 9-11, 2023, designed to be in Louisville, Ky. at the Presbyterian Center, with the option for remote participation. The agenda would include the opportunity for scheduled presentations by senior staff and members of other commission of the General Assembly (including the Funding Model Development Team). The schedule would also reserve time for informal conversations from staff and between members of the Commission.

The subsequent discussion included requests for more detailed information, including financial statements. This information would be posted to EQUIP prior to the meeting. Commissioners were reminded if there are EQUIP access issues to contact Alejandra Sharman. During this conversation, Shavon Starling-Louis arrived and brought greetings.

Executive Session

Felipe Martínez observed the Unification Commission is following a better practice of including an executive session toward the end of the agenda, to include an appropriate time to discuss matters of personnel. There was a motion and second made to enter executive session. It was discussed the intent is not to take any action within executive

session, and the Commission intended to immediately rise from Executive Session, declare there were no actions, and adjourn with prayer. It was noted that any actions would be posted within the hour to the Commission website. The Commission entered executive session. In addition to the Commissioners, the following were invited by Felipe Martínez to remain: those serving ex-officio, and staff and support.

[Recorder's Note: the public livestream noted the Commission was meeting in executive session and the display was paused.]

Rising from
Executive Session

Upon rising from Executive Session, it was reported no action was taken.

Staff reported the full video of today's meeting would be posted within one hour.
(Recorder's Note: posted to <https://vimeo.com/791491597>.)

Closing Prayer

Felipe Martínez entertained a motion to adjourn. After a motion and second and without objection, with a closing prayer the meeting was adjourned at 5:00 p.m.

Respectfully submitted,

/s/ Raymond Bonwell
Recorder



Office of the General Assembly

Office of the General Assembly

The Office of the General Assembly, as envisioned and directed by the General Assembly and the Stated Clerk, supports the ecclesial formation of individuals and councils, providing an important framework and foundation that enables the church to do vital ministry in the world.

The Stated Clerk

- Head of the Office of the General Assembly
- Speaks to and for the church
- Head of Communion and chief ecumenical officer
- Highest office to be directly elected by the General Assembly
- PC(USA) has had only four stated clerks since reunion
- Elected to four-year term – no limit on terms
- J. Herbert Nelson, II was first elected in 2016
- The Stated Clerk Nominating Committee has begun its' work and will bring a nominee to the 226th General Assembly (2024)



Governance

The Committee on the Office of the General Assembly:

- Provides oversight to the Stated Clerk and OGA; it does not, however, supervise the Stated Clerk
- Assures the accountability of the Stated Clerk to GA
- Provides a link to the PMA Board
- Is a committee, not a board

The Committee on the Office of the General Assembly:

- Has 14 at-large members elected by the General Assembly
- Includes the Moderator of GA (or Co-Moderator) who serves ex officio with vote
- Includes the Stated Clerk, the PMA Executive Director and a member of the PMA Board who also serve ex officio with voice



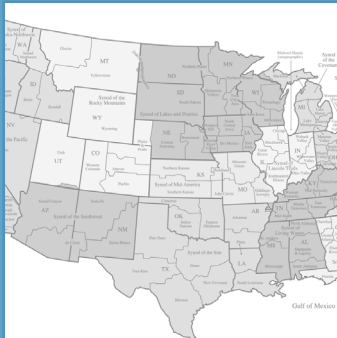
Guiding Values

For the past two budget cycles (2021-2022 and 2023-2024), OGA has identified several values to guide its' work:

- Relationships
- Leadership (re)formation
- Equity and Justice
- Innovation and Courage
- Faithful and Spirit-led

Ministry Areas

The staff and work of the Office of the General Assembly are organized into three ministry areas:



**Mid Council
Ministries**



**Office of the Stated
Clerk**



**Presbyterian
Historical Society**

Mid Council Ministries

Providing support to mid councils and those in ordered ministry and seeking ordination, certification, and calls

Defending and interpreting the Constitution. Providing support and training to stated clerks

Supporting pastors from other countries and advocating for just immigration

Coordinating OGA's work with and for mid councils

15 full-time and 1 part-time staff

Supporting the work of committees of the General Assembly:

- Advisory Committee on the Constitution
- Advisory Committee on Litigation
- Committee on Representation
- Educator Certification Committee
- Nominating Committee
- Permanent Judicial Commission

Also supports the Presbyteries' Cooperative Committee on Examinations of Candidates



Office of the Stated Clerk

Coordinates the communications needs of the Office of the General Assembly and the Stated Clerk

Planning and implementing the biennial General Assembly, and providing logistical support to other committees on a regular basis

Coordinates our witness to and with ecumenical and interreligious conciliar bodies and traditions

13 full-time and 2 part-time staff

Supporting the work of committees of the General Assembly:

- Committee on Ecumenical and Interreligious Relations
- Committee on the Office of the General Assembly
- Special committees, commissions, and task forces



Presbyterian Historical Society

Serves as the national archives of the PC(USA)

Located in Philadelphia

Collects, preserves, and shares the stories of the American Presbyterian experience

21 full-time and 2 part-time staff

Supporting the work of the Presbyterian Historical Society Board (a non-governance board)





Resources

The **Book of Order** describes the responsibilities of the Stated Clerk, as well as those of clerks at every level of council; enables apportionments to be assessed by councils above the session

The **Manual of the General Assembly**, revised for each biennial assembly based upon changes approved by the assembly, includes:

- The **Organization for Mission** describes the work of the Stated Clerk and OGA, as well as the committees for which OGA is responsible
- The **Standing Rules of the General Assembly** provide additional guidance for the Stated Clerk's responsibilities specifically related to the biennial General Assembly

COGA's **Manual of Operations** guides the work and organization of the committee's work

Questions & Answers



The background features a large, abstract circular design. It consists of several concentric, slightly irregular circles in various shades of blue and green, creating a layered, organic effect. The colors transition from a deep blue on the left to a vibrant green on the right.

Presbyterian Mission Agency

Overview of Board and Staff Structure

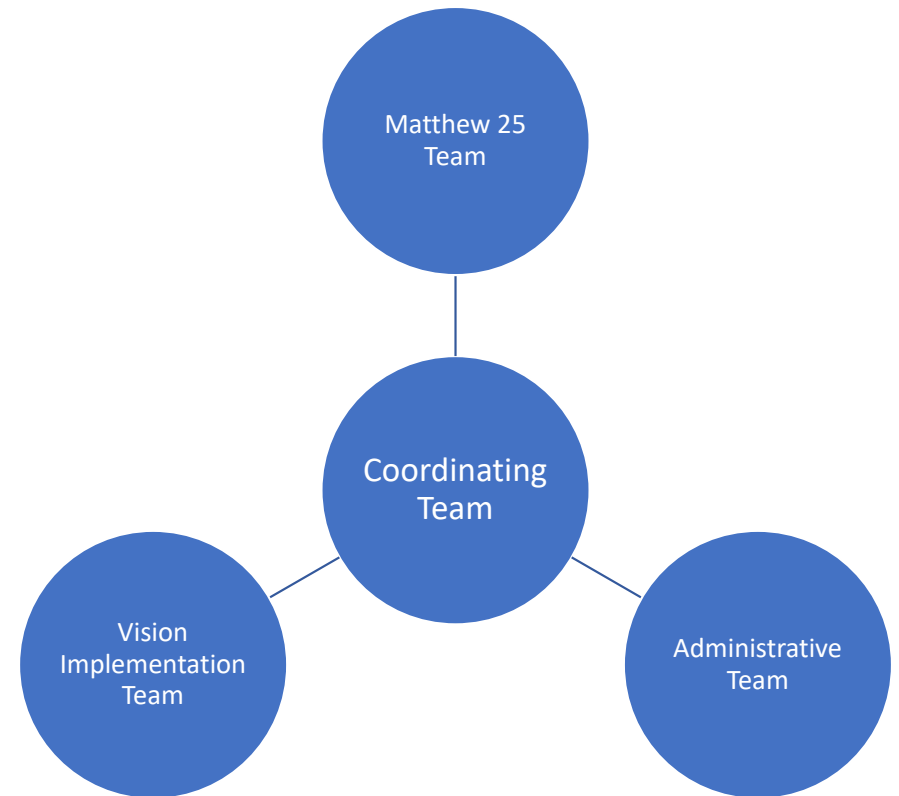
Presbyterian Mission Agency Board

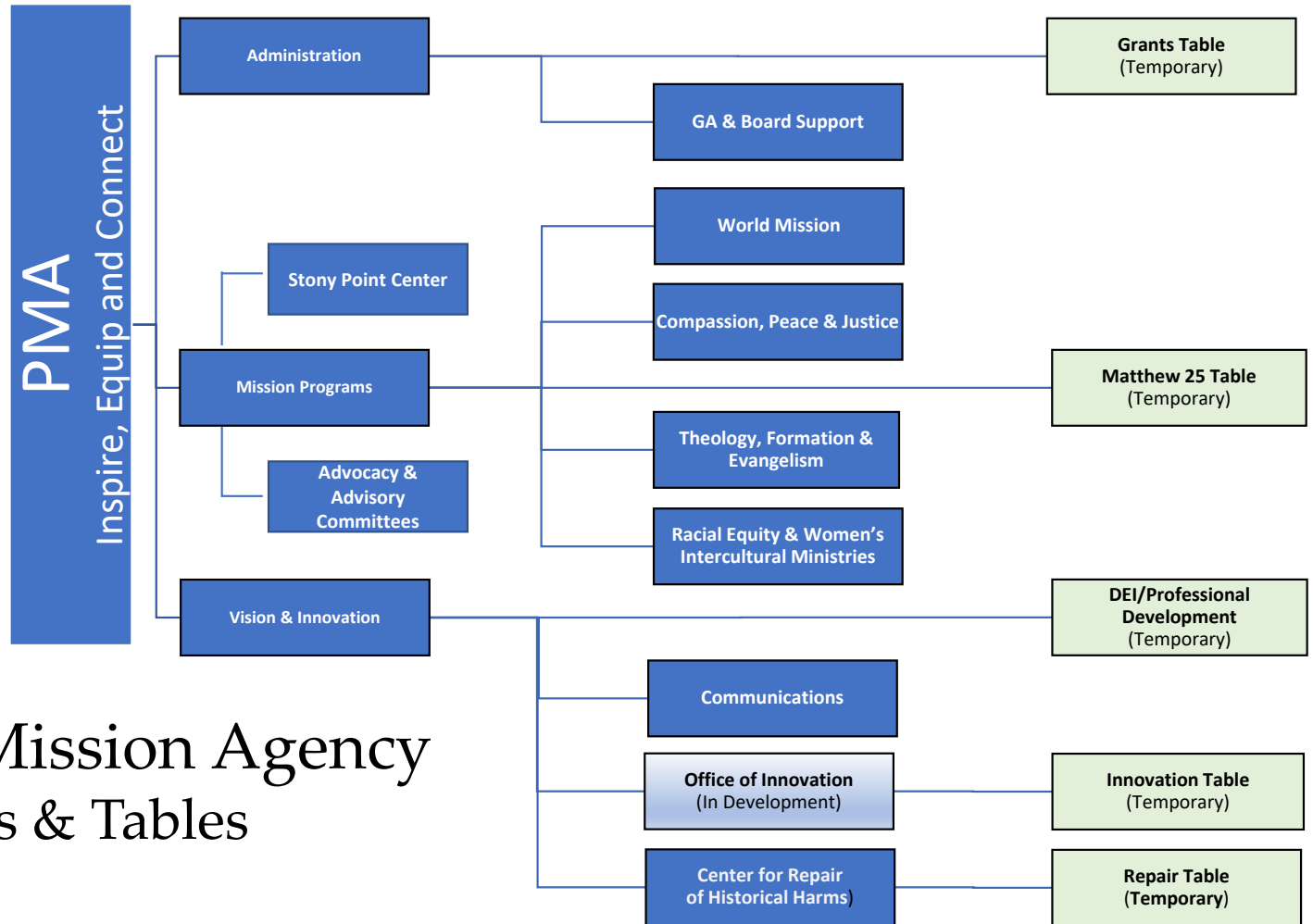
20 voting members

- 15 at-large members - nominated by GANC
- 4 members from other entities – nominated by GANC
 - Office of the General Assembly
 - Racial Equity Advocacy Committee
 - Advocacy Committee for Women & Gender Justice
 - Advisory Committee on Social Witness Policy
- 1 member from Presbyterian Women

10 non-voting members

- | | |
|------------------------------------|------------------|
| • GA Moderator | • FDN president |
| • PMA President/Executive Director | • PILP president |
| • GA Stated Clerk | • PPC president |
| • BOP president | • 2 Ecumenical |
| • A Corp president | Advisory members |





Presbyterian Mission Agency Functions & Tables

Compassion, Peace & Justice	Racial Equity & Women’s Intercultural Ministries	Theology, Formation & Evangelism	World Mission	Center for the Repair of Historical Harms	Office of Innovation	Administration	Communications
Office of Public Witness in Washington, D.C.	Intercultural Ministries & Support for Congregations of Color - African	1001 New Worshipping Communities	Area Office for Africa		In Development	Administration	Collaborative communications with other agencies
Presbyterian Disaster Assistance	Intercultural Ministries - African	Camps & Conference Centers	Area Office for Asia- Pacific			Board Support	
Presbyterian Health, Education & Welfare Association	American Intercultural CS - Asian Intercultural CS - Hispanic/Latino- a Intercultural CS	Christian Formation	Area Office for the Middle East & Europe			Budgets	Communications education and consultation with mid-councils
Presbyterian Hunger Program	- Korean Intercultural CS - Middle Eastern Intercultural Ministries - Native	Collegiate Ministries	Area Office for Latin America & the Caribbean			General Assembly Support	Communicators network with mid-councils
Presbyterian Ministry at the United Nations	American Intercultural CS	Committee on Theological Education (COTE)	Equipping for Mission Involvement				Multi- mediated messaging and social networking
Presbyterian Peacemaking Program	Leadership Development for Leaders of Color - Mission Program Grants	Financial Aid for Service	Global Mission Partnerships				PresbyTel
Presbyterian Self- Development of People	- Schools and Colleges Equipping Communities of Color - Leadership Development & Recruitment for Leaders of Color	Ministries with Youth	Jinishian Memorial Program				Presbyterian News Service
Racial & Intercultural Justice (joint ministry with Racial Equity & Women’s Intercultural Ministries)		Theological Conversations	Mission Personnel				Print Publications
	Women’s Leadership Development & Justice Ministries - Gender & Racial Justice - Racial & Intercultural Justice (joint office with CPJ) - Women’s Leadership Development & Young Women’s Ministries	Vital Congregations	Mission Service Recruitment				Strategic Communications (Consulting, Design & Messaging)
		Worship	Young Adult Volunteers				Web/Digital/Social media development and production
	Covenant relationships						

Sources of INCOME



Contributions

Congregations
Gifts, bequests, and grants
Special giving and special offering
Other PMA



Investment Returns

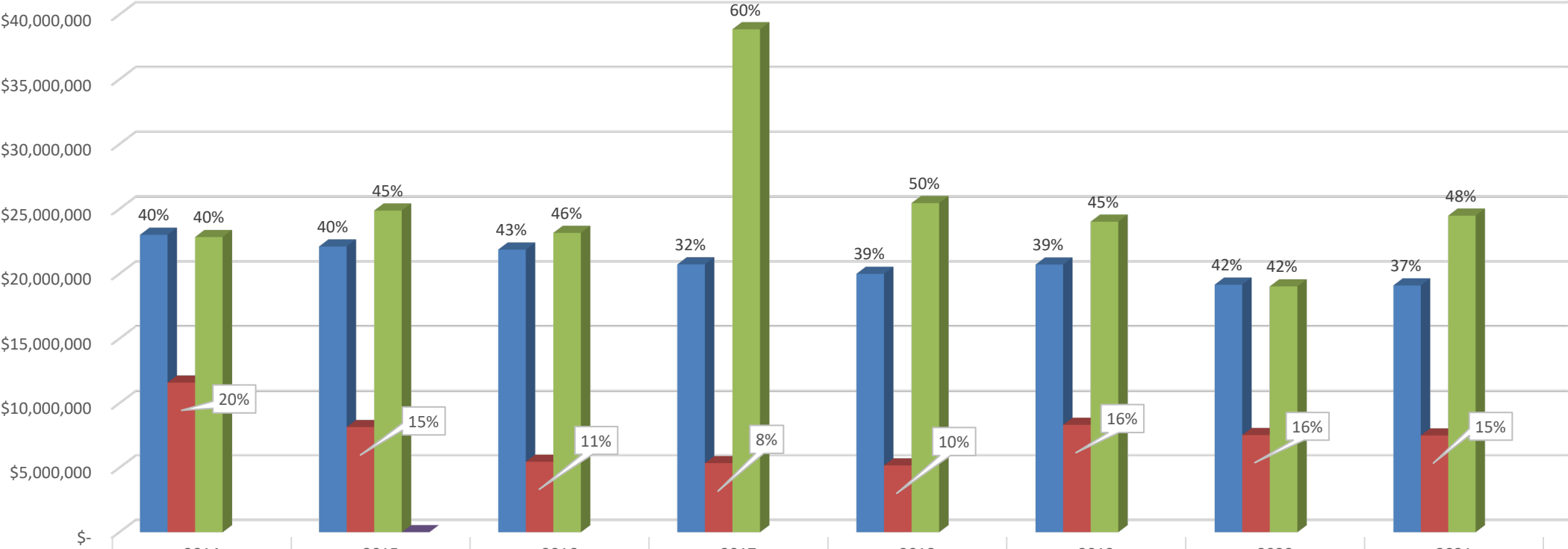
Income from endowments held by
the Foundation
Income from other investments
Realized gain (loss) investment net
Unrealized gain (loss) investment
net
Change in value beneficial interest



Other Income

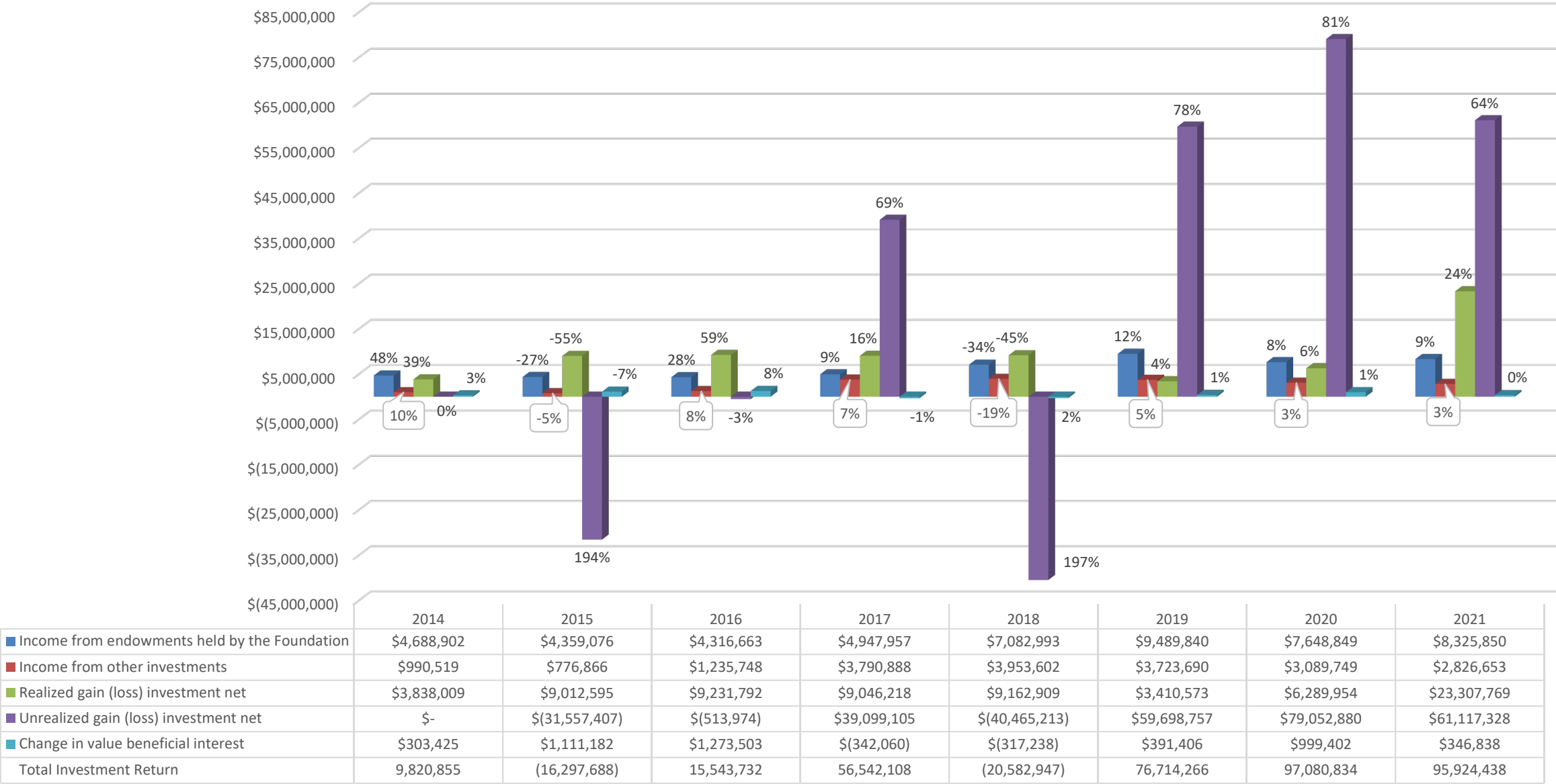
Interest Income from loans
Hubbard Press
Sales of Resources
Program Services
Other

Contributions

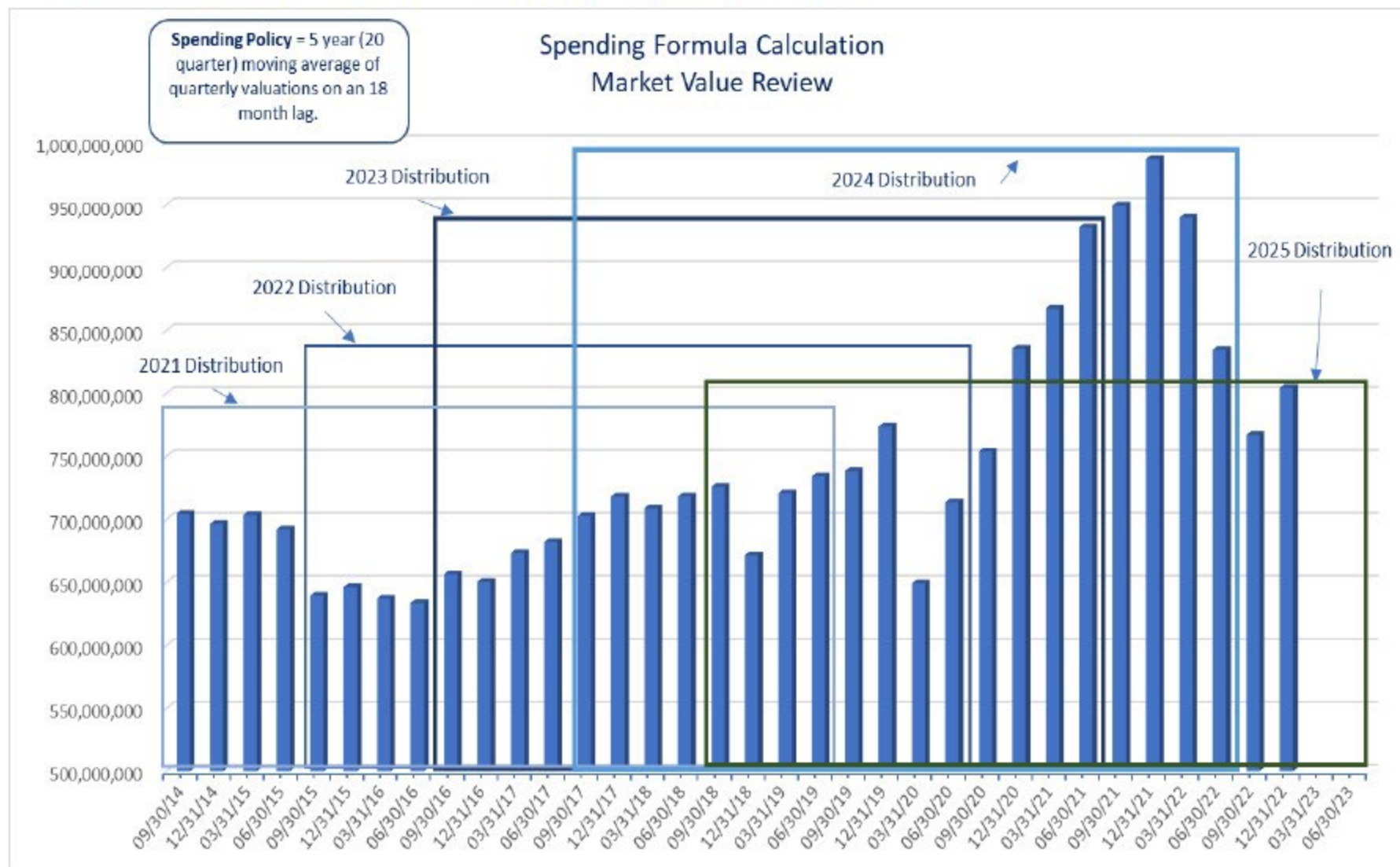


Congregations	2014	2015	2016	2017	2018	2019	2020	2021
Gifts, bequests, and grants	\$23,010,497	\$22,111,025	\$21,868,331	\$20,728,938	\$19,999,968	\$20,714,416	\$19,164,139	\$19,105,498
Special giving and special offering	\$11,604,257	\$8,151,051	\$5,466,744	\$5,356,715	\$5,179,688	\$8,327,622	\$7,533,214	\$7,500,379
Other PMA	\$22,836,897	\$24,882,266	\$23,155,990	\$38,863,806	\$25,459,633	\$24,025,427	\$19,029,654	\$24,488,140
		\$880						
Total Contributions	57,451,651	55,145,222	50,491,065	64,949,459	50,639,289	53,067,465	45,727,007	51,094,017

Investment Return

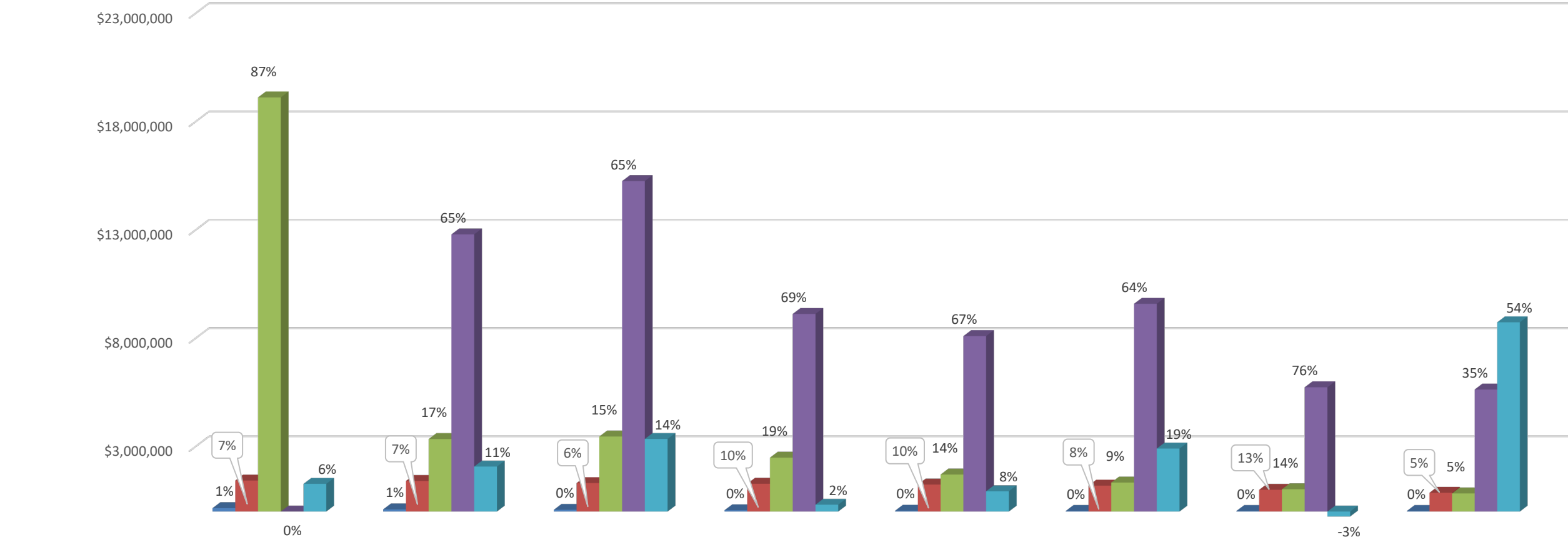


SPENDING POLICY – WHERE ARE WE AT?



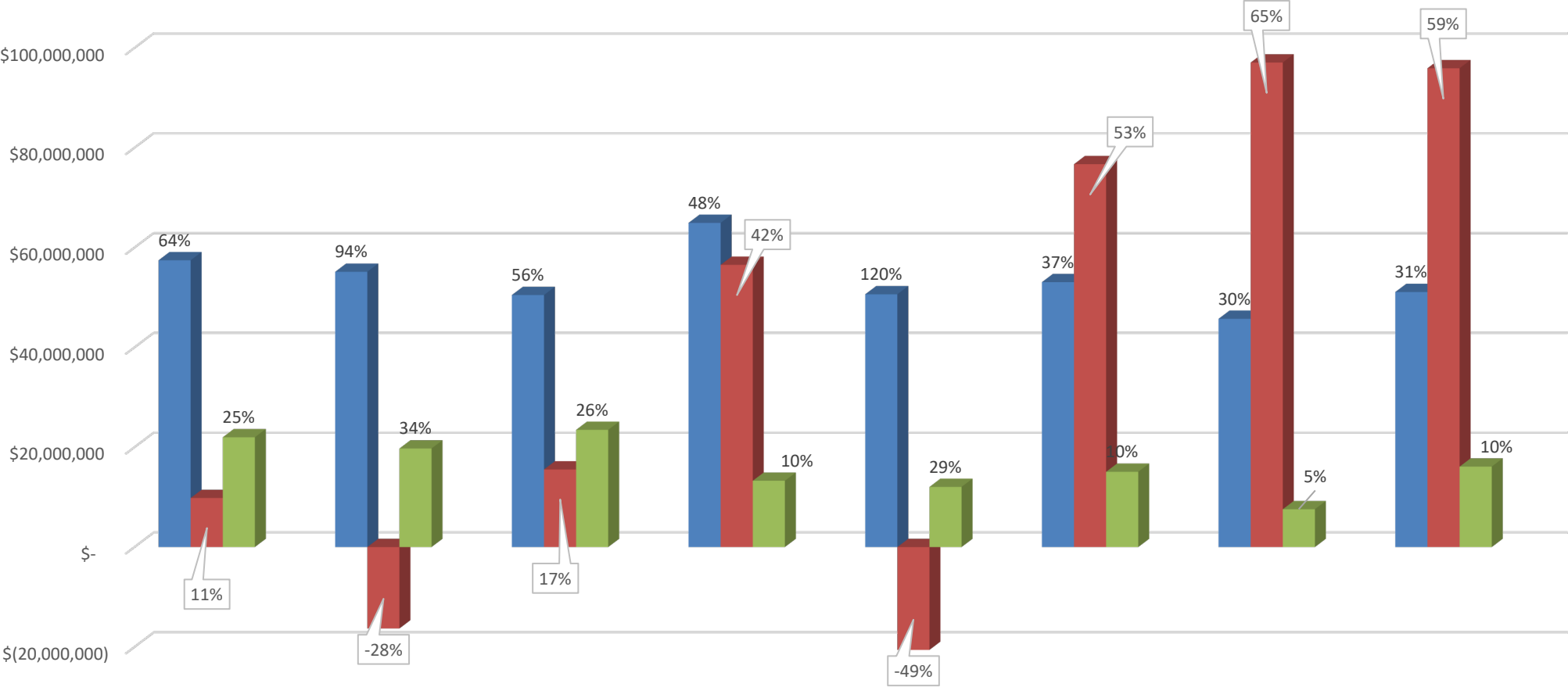
Past performance does not guarantee future results. References to expected returns are not promises or even estimates of actual returns an investor may achieve. The assumptions, views, techniques and estimates set out are provided for illustrative purposes only. "Expected" or "alpha" return estimates are subject to uncertainty and error. The ability to achieve similar outcomes is subject to risk factors over which Northern Trust may have no or limited control.

Other Income



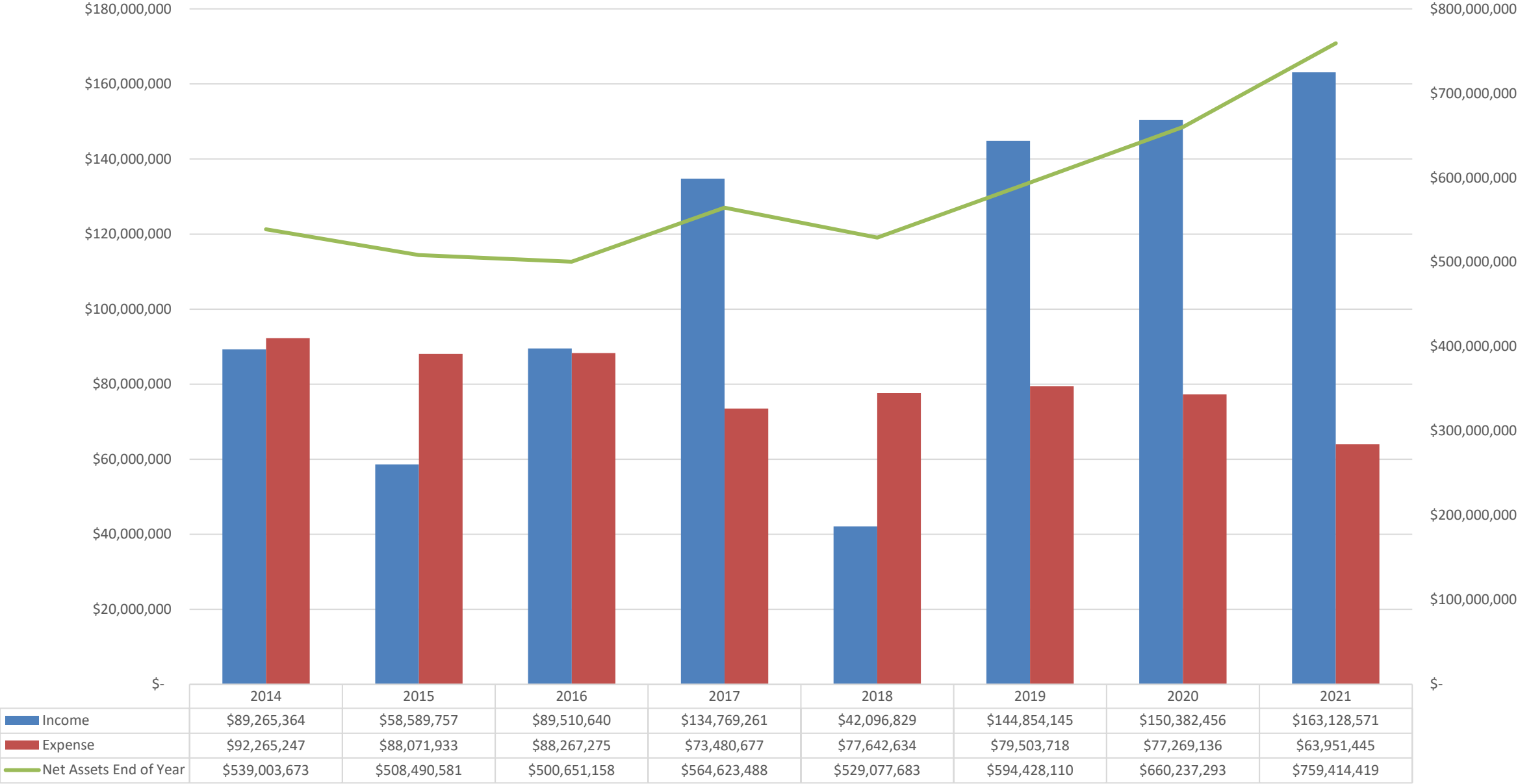
	2014	2015	2016	2017	2018	2019	2020	2021
Interest Income from loans	\$158,058	\$99,850	\$80,271	\$58,710	\$37,932	\$27,576	\$25,379	\$25,469
Hubbard Press	\$1,432,051	\$1,413,353	\$1,314,101	\$1,285,374	\$1,248,976	\$1,198,323	\$1,005,242	\$867,909
Sales of Resources	\$19,122,995	\$3,350,311	\$3,468,319	\$2,490,204	\$1,710,680	\$1,340,123	\$1,029,765	\$836,672
Program Services	\$-	\$12,799,605	\$15,259,217	\$9,127,615	\$8,105,245	\$9,596,219	\$5,742,164	\$5,638,197
Other	\$1,279,754	\$2,079,104	\$3,353,935	\$315,791	\$937,654	\$2,910,173	\$(227,935)	\$8,741,869
Total Other Income	21,992,858	19,742,223	23,475,843	13,277,694	12,040,487	15,072,414	7,574,615	16,110,116

Total Income

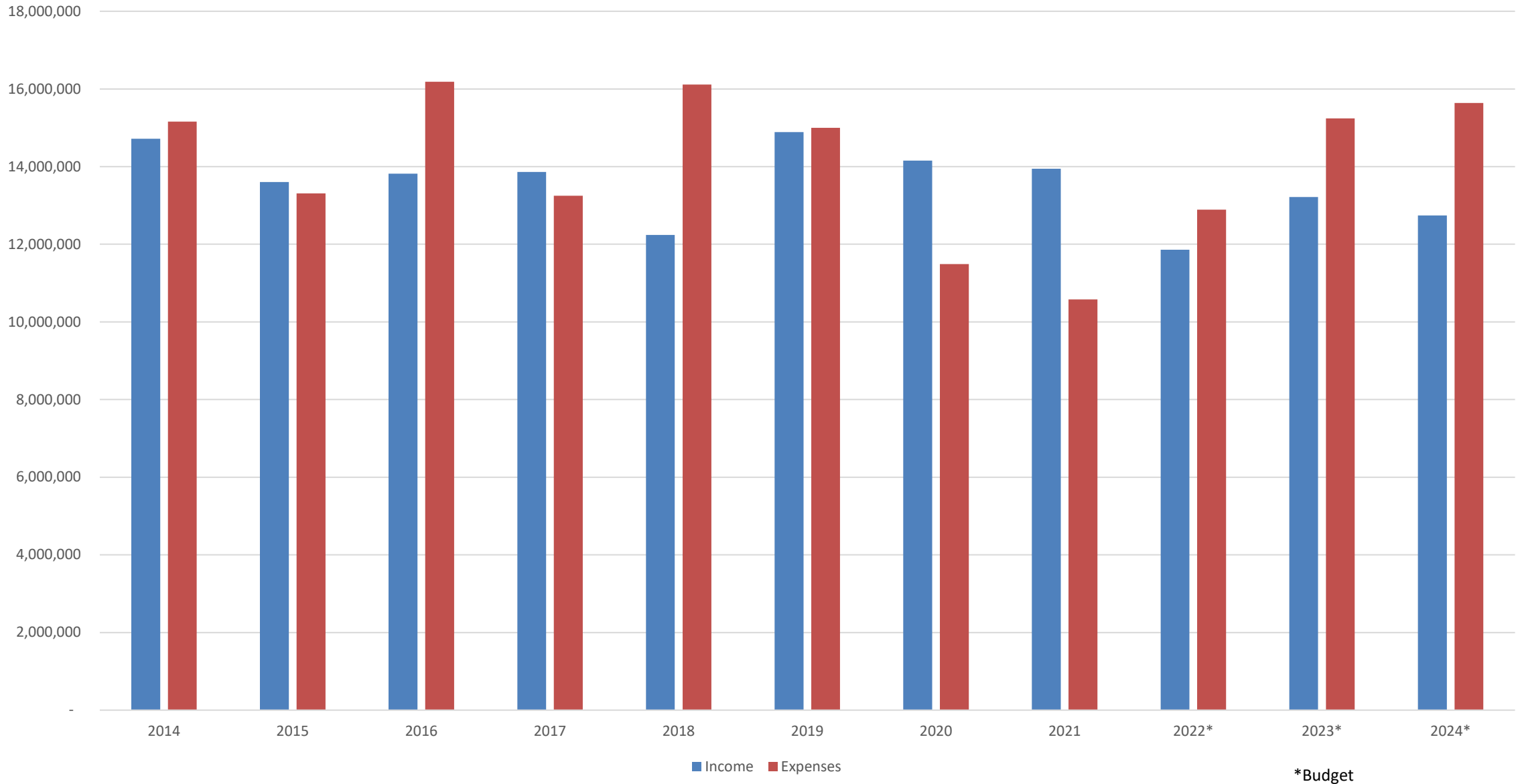


	2014	2015	2016	2017	2018	2019	2020	2021
Total Contributions	\$57,451,651	\$55,145,222	\$50,491,065	\$64,949,459	\$50,639,289	\$53,067,465	\$45,727,007	\$51,094,017
Total Investment Return	\$9,820,855	\$(16,297,688)	\$15,543,732	\$56,542,108	\$(20,582,947)	\$76,714,266	\$97,080,834	\$95,924,438
Total Other Income	\$21,992,858	\$19,742,223	\$23,475,843	\$13,277,694	\$12,040,487	\$15,072,414	\$7,574,615	\$16,110,116
TOTAL	\$89,265,364	\$58,589,757	\$89,510,640	\$134,769,261	\$42,096,829	\$144,854,145	\$150,382,456	\$163,128,571

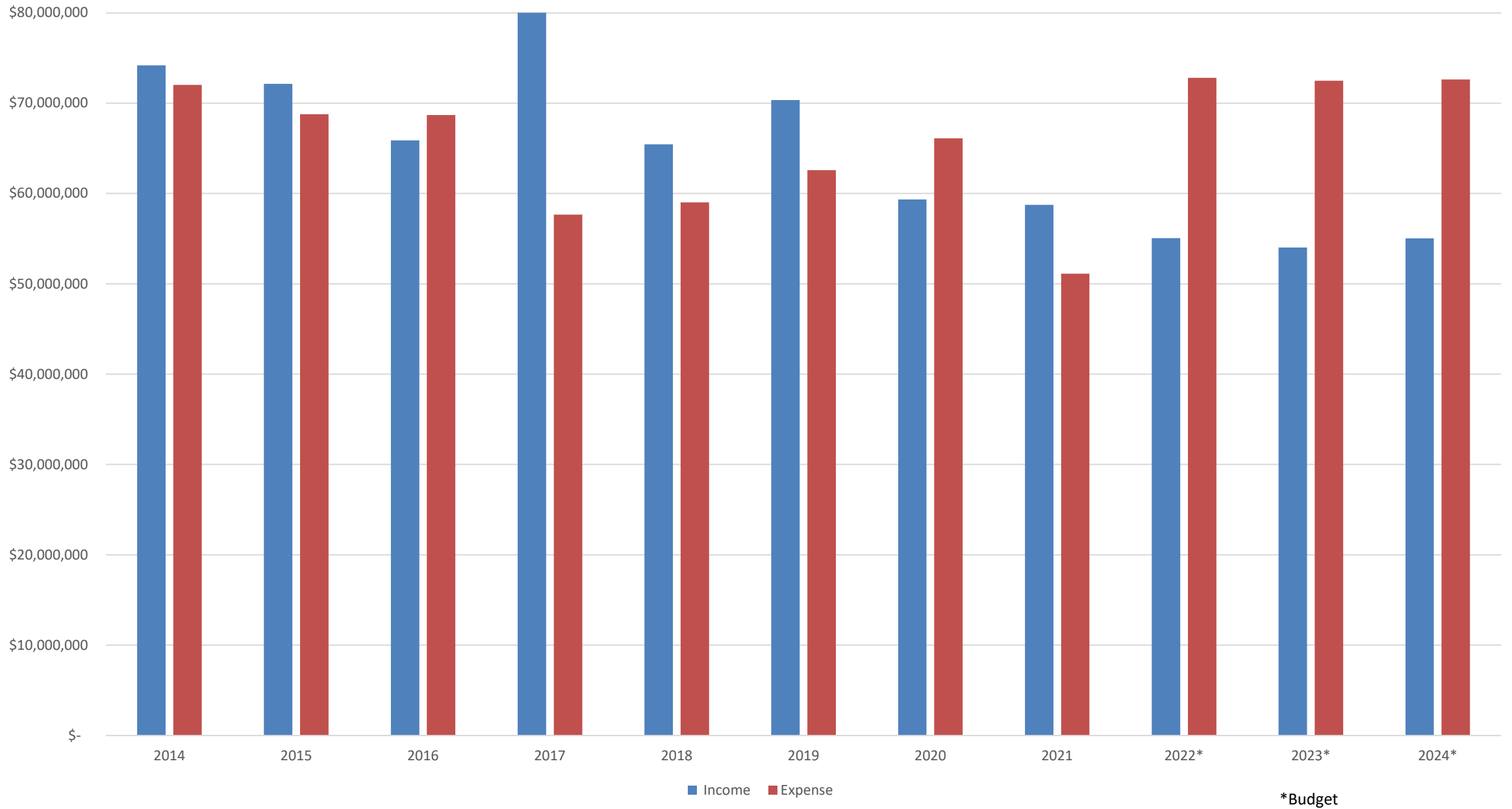
Income vs. Expense | Change in Net Assets



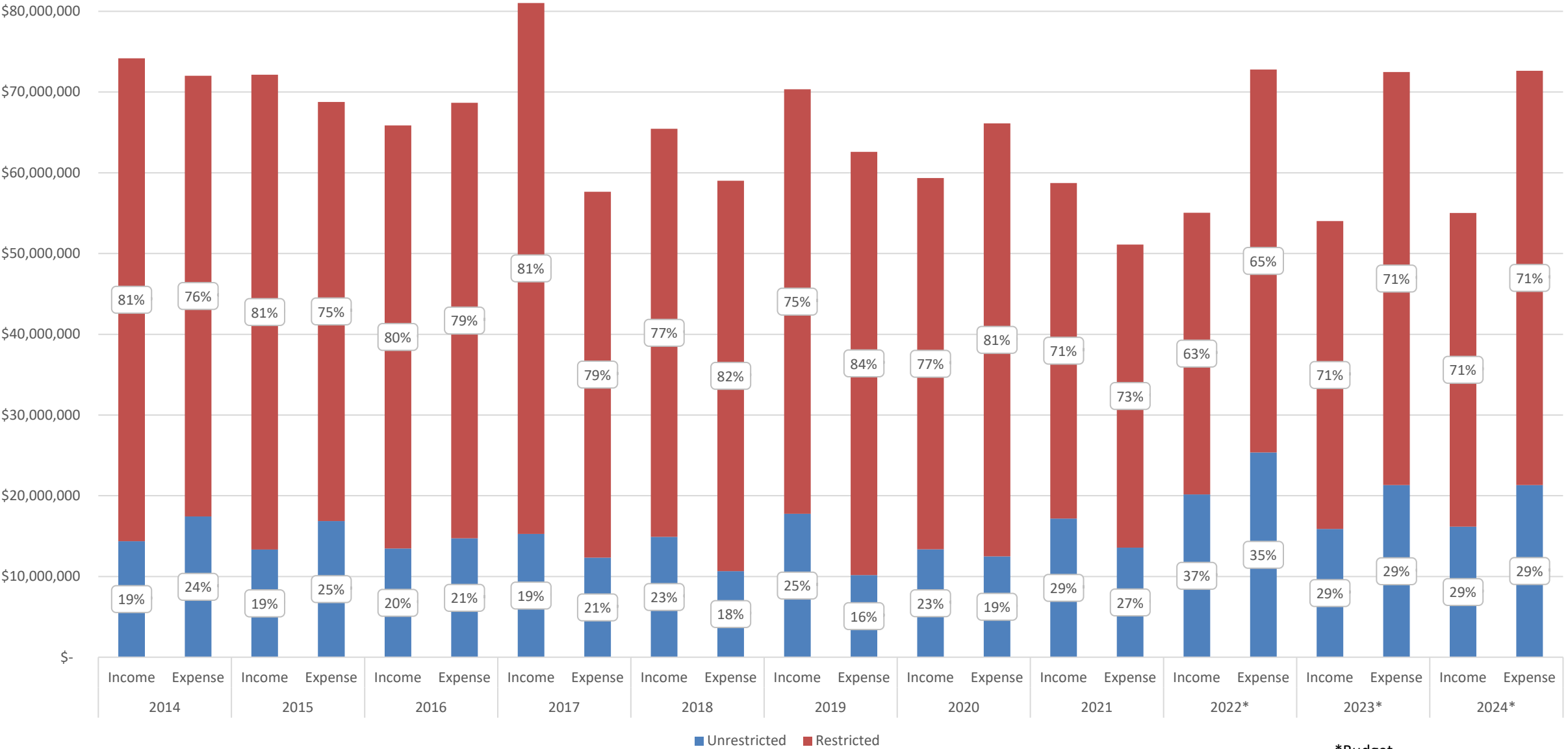
OGA - Income vs. Expense



PMA - Income vs. Expense



PMA - Income vs. Expense (Unrestricted/Restricted)



*Budget

PRESBYTERIAN CHURCH (U.S.A.), A CORPORATION
CONSOLIDATED STATEMENT OF ACTIVITIES AND CHANGES IN NET ASSETS
FOR YEARS ENDED 2014-2021

	2014	2015	2016	2017	2018	2019	2020	2021
Revenue, Gains, and Other Support								
Contributions								
Congregations	\$ 23,010,497	\$ 22,111,025	\$ 21,868,331	\$ 20,728,938	\$ 19,999,968	\$ 20,714,416	\$ 19,164,139	\$ 19,105,498
Gifts, bequests, and grants	11,604,257	8,151,051	5,466,744	5,356,715	5,179,688	8,327,622	7,533,214	7,500,379
Special giving and special offering	22,836,897	24,882,266	23,155,990	38,863,806	25,459,633	24,025,427	19,029,654	24,488,140
Other PMA	-	880	-	-	-	-	-	-
Total Contributions	57,451,651	55,145,222	50,491,065	64,949,459	50,639,289	53,067,465	45,727,007	51,094,017
Investment Return								
Income from endowments held by the Foundation	4,688,902	4,359,076	4,316,663	4,947,957	7,082,993 ¹	9,489,840	7,648,849	8,325,850
Income from other investments	990,519	776,866	1,235,748	3,790,888	3,953,602	3,723,690	3,089,749	2,826,653
Realized gain (loss) investment net	3,838,009	9,012,595	9,231,792	9,046,218	9,162,909	3,410,573	6,289,954 ²	23,307,769 ²
Unrealized gain (loss) investment net	- ³	(31,557,407)	(513,974)	39,099,105	(40,465,213)	59,698,757	79,052,880	61,117,328
Change in value beneficial interest	303,425	1,111,182	1,273,503	(342,060)	(317,238)	391,406	999,402	346,838
Total Investment Return	9,820,855	(16,297,688)	15,543,732	56,542,108	(20,582,947)	76,714,266	97,080,834	95,924,438
Other Income								
Interest Income from loans	158,058	99,850	80,271	58,710	37,932	27,576	25,379	25,469
Hubbard Press	1,432,051	1,413,353	1,314,101	1,285,374	1,248,976	1,198,323	1,005,242	867,909
Sales of Resources	19,122,995 ⁴	3,350,311	3,468,319	2,490,204	1,710,680	1,340,123	1,029,765	836,672
Program Services	-	12,799,605	15,259,217	9,127,615	8,105,245	9,596,219	5,742,164	5,638,197
Other (2021 Federal Grant Award \$8.8m)	1,279,754	2,079,104	3,353,935	315,791	937,654	2,910,173	(227,935)	8,741,869 ⁵
Total Other Income	21,992,858	19,742,223	23,475,843	13,277,694	12,040,487	15,072,414	7,574,615	16,110,116
Total Revenue, Gains, and Other Support	89,265,364	58,589,757	89,510,640	134,769,261	42,096,829	144,854,145	150,382,456	163,128,571
Expenses								
Total Expenses	92,265,247	88,071,933	88,267,275	73,480,677	77,642,634	79,503,718	77,269,136	63,951,445
Additional Change in Net Assets (Below)		(1,030,916) ⁶	(9,082,788) ⁷					
Change in Net Assets	(2,999,883)	(30,513,092)	(7,839,423)	61,288,584	(35,545,805)	65,350,427	73,113,320	99,177,126
Net Assets Beginning of Year	542,003,556	539,003,673	508,490,581	503,334,904 ⁸	564,623,488	529,077,683	587,123,973 ⁹	660,237,293
Net Assets End of Year	\$ 539,003,673	\$ 508,490,581	\$ 500,651,158	\$ 564,623,488	\$ 529,077,683	\$ 594,428,110	\$ 660,237,293	\$ 759,414,419

See Accompanying Notes

PRESBYTERIAN CHURCH (U.S.A.), A CORPORATION
CONSOLIDATED STATEMENT OF ACTIVITIES AND CHANGES IN NET ASSETS
FOR YEARS ENDED 2014-2021

NOTES

INVESTMENT RETURN

- (1) **Income from endowment funds held by the Foundation - 2018** - The higher income earnings are attributed to a change in the allocation of the investment pool at the Foundation. A higher allocation to real estate investment trusts (REITs) generated a higher income yield.
- (2) **Realized gain (loss) investment net - 2020 and 2021** - The realized gains/losses are driven by selling the underlying pool securities. It depends on what and when money managers sell assets; the investment managers make these decisions.
- (3) **Unrealized gain (loss) investment net - 2014** - The unrealized and realized gains (losses) were included and reported on the realized gain (loss) line.

OTHER INCOME

- (4) **Sales of Resources - 2014** - The sales of resources in 2014 included both sales of resources activity and program services activity.
- (5) **Other - 2021** - Presbyterian Church (U.S.A.), A Corporation, received \$8,850,500 from the Small Business Administration Paycheck Protection Program under the Coronavirus Aid, Relief, and Economic Security ("CARES") Act.

ADDITIONAL CHANGE IN NET ASSETS

- (6) **2015** - This change is a result of an action of the 221st General Assembly to transfer the Theological Education Fund (the "Fund") from the Presbyterian Mission Agency ("PMA") to the Presbyterian Church (U.S.A.) Foundation ("Foundation").
- (7) **2016** - The decrease is due to the transfer of the Ghost Ranch Education and Retreat Center operations to the National Ghost Ranch Foundation.

NET ASSETS BEGINNING OF YEAR

- (8) **2017** - The beginning balance net assets were restated from prior year due to the addition of beneficial interests in certain outside trusts that were not recorded.
- (9) **2020** - Net assets at the beginning of 2020 were restated due to the removal of trusts. A determination was made that PC(USA) was not the beneficiary of two outside trusts for which a beneficial interest had been recorded.

Presbyterian Mission Agency and Office of General Assembly
2014 - 2024 Income and Expenses
History and Budget

	History								Budget		
Office of the General Assembly (Includes Per Capita and the Department of History)	2014	2015	2016	2017	2018	2019	2020	2021	2022	2023	2024
Income	14,719,119	13,601,556	13,819,494	13,864,395	12,238,190	14,887,782	14,154,341	13,945,231	11,861,552	13,216,043	12,739,076
Expenses	15,157,703	13,308,124	16,184,035	13,249,173	16,113,649	14,999,135	11,488,184	10,579,055	12,890,853	15,239,117	15,636,964
Net to (from) Reserves	(438,584)	293,432	(2,364,541)	615,222	(3,875,459)	(111,353)	2,666,157	3,366,176	(1,029,301)	(2,023,074)	(2,897,888)

	History								Budget		
Mission Agency	2014	2015	2016	2017	2018	2019	2020	2021	2022	2023	2024
Income											
Unrestricted	14,382,267	13,349,636	13,473,047	15,271,770 (1)	14,910,445	17,769,459 (2)	13,359,914	17,186,830 (3)	20,174,007 (4)	15,898,334	16,168,696
Restricted	59,804,775	58,795,298	52,395,780	65,766,237 (5)	50,530,046	52,566,405 (6)	45,991,375	41,554,233 (7)	34,887,504 (8)	38,126,276	38,859,707
Total Mission Agency Income	74,187,042	72,144,934	65,868,827	81,038,007	65,440,491	70,335,864	59,351,289	58,741,063	55,061,511	54,024,610	55,028,403
Expenses											
Unrestricted	17,446,883	16,876,817	14,729,913	12,339,608	10,677,697	10,183,608	12,505,762 (9)	13,570,823	25,374,906 (10)	21,314,649	21,335,915
Restricted	54,572,451	51,902,959	53,949,354	45,325,022	48,328,957	52,409,440 (11)	53,604,083	37,551,402 (12)	47,423,689 (13)	51,166,117	51,298,115
Total Mission Agency Expenses	72,019,334	68,779,776	68,679,267	57,664,630	59,006,654	62,593,048	66,109,845	51,122,225	72,798,595	72,480,766	72,634,030
Change in Net Assets											
Unrestricted (Use) Additions to Reserve Funds	(3,064,616)	(3,527,181)	(1,256,866)	2,932,162	4,232,748	7,585,851	854,152	3,616,007	(5,200,899)	(5,416,315)	(5,167,219)
Restricted (Use) Additions to Reserve Funds	5,232,324	6,892,339	(1,553,574)	20,441,215	2,201,089	156,965	(7,612,708)	4,002,831	(12,536,185)	(13,039,841)	(12,438,408)
Total (Use) Additions to Reserve Funds	2,167,708	3,365,158	(2,810,440)	23,373,377	6,433,837	7,742,816	(6,758,556)	7,618,838	(17,737,084)	(18,456,156)	(17,605,627)

Unrestricted Income

- (1) 2017 history includes an increase in Outside Trust income
- (2) 2019 history includes an increase in Outside Trust income and Gifts and Bequests
- (3) 2021 history reflects a change in reporting of unrestricted, designated income (Stony Point guest revenue, Special Events, Church Loan income) that was previously reported "with donor restriction"
- (4) The 2022 budget includes \$2.5 million for Youth Triennium

Restricted Income

- (5) 2017 history includes Presbyterian Disaster Assistance (PDA) Hurricane Relief of \$10 million and large restricted gifts of \$8 million
- (6) 2019 history includes a decrease in One Great Hour of Sharing (OGHS) of \$2 million and a decrease in gifts and bequests of \$4 million
- (7) 2021 history reflects a change in reporting of unrestricted, designated income (Stony Point guest revenue, Special Events, Church Loan income) that was previously reported "with donor restriction"
- (8) The 2022 budget reflects a 20% reduction in Presbyterian Mission Agency (PMA) contributions due to the pandemic

Unrestricted Expenses

- (9) 2020 history includes the Stony Point loss of \$2.1 million
- (10) The 2022 budget reflects standard travel and the meeting budget

Restricted Expenses

- (11) 2019 history includes Youth Triennium expenses
- (12) 2021 history reflects a decrease in spending due to the travel and meeting ban for PCUSA
- (13) The 2022 budget reflects standard travel and the meeting budget

OGA/PMA Collaborations



Previous
efforts
(together with
ASG)



COVID financial team



COVID steering committee



Conference Center planning

Ongoing efforts

International Issues Working Group	PMA, OGA
Matthew 25 Summit planning (January 2024)	PMA, OGA
Center for Repair Intra-Agency Team	PMA, ASG, OGA
Office of Innovation Intra-Agency Team	PMA, OGA, BOP
Website Advisory Team	PMA, ASG, OGA
IT Advisory Team	PMA, ASG, OGA
Website & IT Steering Committee	OGA, PMA, ASG
Coordinating Table	ASG, OGA, PMA – GA mandated
Presbyterian Leader Formation Faculty	OGA, PMA
Group of Five	PMA, ASG, OGA
Gift Acceptance Committee	OGA, ASG, PMA
Staff to the Unification Commission	OGA, PMA, ASG
Diverse Voices Table	ASG, BOP, FDN, ILP, OGA, PMA, PPC, PW
Presbyterian Youth Triennium Table	ASG, OGA, PMA
Global Visioning Team	PMA, OGA
Travel Advisory Team	ASG, OGA, PMA
Polity, Benefits & Mission Conference planning team	PMA, OGA, BOP, mid council leaders



Mandates

- Oversee and facilitate unification
- Align entities, board, committees, and constituent bodies toward long term faithfulness and financial sustainability of its mission
- Establish missional and ecclesial coordination
- Determine strategies and priorities across all entities, boards, committees, and constituent bodies where all available dollars, responsibilities, and charges are evaluated and unified to provide the best accomplishment of GA goals
- Provide governance for, and have the authority to assume all governance functions of PMAB and COGA as necessary



Mandates

- Review, address and align financial agreements including per capita, restricted and unrestricted funds, to support the new Organization for Mission so that each area of mission has adequate funds to sustain its mission long term
- The power to combine, unify, eliminate, and/or create any necessary organizational structure, including personnel and budget, to accomplish these missional strategies and priorities.
- Determine the structure moving forward and present new Organization for Mission to GA 227 (2026)

Timeline Wonderings

- Unification: when? GA action is open to interpretation
- Unify agencies before re-write of *Organization for Mission* (2024-2025), or coincident with the re-write (GA 227th in 2026)?
- 226th General Assembly (2024)
- 2025 – 2026 Budget Cycle

Timeline for the Commission

The Commission is appointed

November 2022

The Commission begins meeting

December 2022

120 Day Deadline for Commission's report

February 26, 2024

Timeline for the Commission

60 Day Deadline for Financial Implications

April 26, 2024

226th General Assembly – Salt Lake City

June 25 – July 4, 2024

227th General Assembly - TBD

Summer 2026

Consultations

Unification Commission

Consultations

The
Commission
will consult
with:

- Representatives from OGA and PMA
- All other agencies, committees, staff, and PC(USA) entities and their boards
- Advocacy and Advisory Committees
- Mid Councils

Consultations— Agencies and Entities

Committee on the Office
of the General Assembly
(COGA, ecclesial
committee)

Presbyterian Mission
Agency Board (PMAB,
ecclesial committee)

Presbyterian Foundation
(FDN, separate
corporation)

Board of Pensions (BOP,
separate corporation)

Presbyterian Investment
and Loan Program (PILP,
separate corporation)

Presbyterian Publishing
Corporation (PPC,
separate corporation)

Presbyterian Women
(PW, entity)

Presbyterian Church
(U.S.A.), A Corporation
(A Corp, entity, umbrella
corporation for OGA and
PMA)

Consultations—Committees/Board relating to OGA

- Advisory Committee on Litigation (ACL)
- Advisory Committee on the Constitution (ACC)
- General Assembly Committee on Representation (GACOR)
- General Assembly Committee on Ecumenical and Interreligious Relations (GACEIR)
- General Assembly Nominating Committee (GANC)
- General Assembly Permanent Judicial Commission (PJC)
- Stated Clerk Nominating Committee (SCNC)
- Presbyterian Historical Society Board (PHS)

Consultations—Committees relating to PMA

- Advisory Committee on Social Witness Policy (ACSWP)
- Advocacy Committee on Women's and Gender Justice (ACWGJ)
- Advocacy Committee for LGBTQIA+Equity
- Racial Equity Advocacy Committee (REAC)
- Committee on Theological Education (COTE)
- Mission Responsibility Through Investment (MRTI)

Consultations—other important groups

Caucuses

- Native American Consulting Committee
- National Middle Eastern Presbyterian Caucus
- National Black Presbyterian Caucus
- National Presbyterian Hispanic Latino Caucus
- National Asian Presbyterian Caucus
- National Caucus of Korean Presbyterian Churches

Consultations



Mid Councils

Consultations

What do you want to know or find out?

- Possible questions:
 - What are your views on the unification?
 - What are your hopes?
 - What are your concerns?
 - What impact do you think unification will have on your work?
 - What is an important outcome of unification?
 - What would you like the Commission to know and to consider in their work?
 - What values should guide the commission's work and how should they be applied?"



Consultations— possible strategies

- Request time on the agenda for upcoming 2023 board and entity meetings, either in person or via Zoom
- Take advantage of scheduled in person meetings, such as joint COGA/PMAB in April, Policy, Benefits and Mission Conference for Mid Council Leaders in October
- Take advantage of scheduled consultations, such as Stated Clerk and Executive Director twice yearly meetings with caucuses
- Develop a survey to solicit input from Mid Councils
- Schedule Zooms with committee